

The Eisei Bunko Collection

Eisei Bunko Museum was established in 1950 by Moritatsu, the 16th head of the Hosokawa family that formerly ruled over the vast Higo-Kumamoto domain and was authorized as a public interest incorporated foundation in December 2009. Moritatsu's intention was to preserve and carry out research of his own art collection as well as the numerous artworks and historical materials that were handed down through the family for generations.

The name "Eisei" is a combination of "Ei" of Eigen-an and "Sei" of Seiryuji (Shoryuji) Castle, both deeply connected to the history of the family. Eigen-an is a sub-temple of the Kyoto Kenninji, where successive generations from Hosokawa Yoriari (1332-91), the founder of the clan and a military commander during the Nanbokuchō period, to Mototsune (1482-1554) are buried. Shoryuji Castle was the residence of Hosokawa Fujitaka (Yusai 1534-1610), who is revered as the first generation of the modern line of the Hosokawa family.

Eisei Bunko Museum is located in a verdant area of Mejirodai in Bunkyo-ku, where visitors can enjoy the traditional landscape of Musashino. The suburban residence of the Hosokawa family was formerly located in this area, and the museum building had been previously used as "*kaseijo*" (administrative office) before renovation in the early Showa period.

The museum holds nearly 94,000 items of artworks and documents related to the 700 year history of the Hosokawa family and Moritatsu's private art collection including 8 National Treasures and 32 Important Cultural Properties. The collection consists of various objects such as arms and armor, textiles, paintings, calligraphic works, ceramics, lacquer works, sculptures, historical documents, and modern Japanese paintings, and is highly appreciated as a valuable historical resource worldwide. Research and studies of the collection continue to be carried on today with certain objects entrusted to Kumamoto University (about 58,000 items) and Keio University (about 28,000 items).

EISEI BUNKO MUSEUM

Address

1-1-1 Mejiro-dai, Bunkyo-ku, Tokyo
Telephone 03-3941-0850
<http://www.eiseibunko.com/>

Directions

From Mejiro Station (JR):

Take 白(shiro) 61 bus bound for Shinjuku Station West Exit to Mejirodai 3chome bus stop and walk for 5 minutes.

From Zoshigaya Station F10 (Tokyo Metro Fukutoshin Line):

Take 白(shiro) 61 bus bound for Shinjuku Station West Exit to Mejirodai 3chome bus stop and walk for 5 minutes.

From Waseda Station (Toei Streetcar Arakawa Line): Walk for 10 minutes.

From Edogawabashi Station Y12 (Tokyo Metro Yurakucho Line): Walk for 15 minutes from 1a Exit.

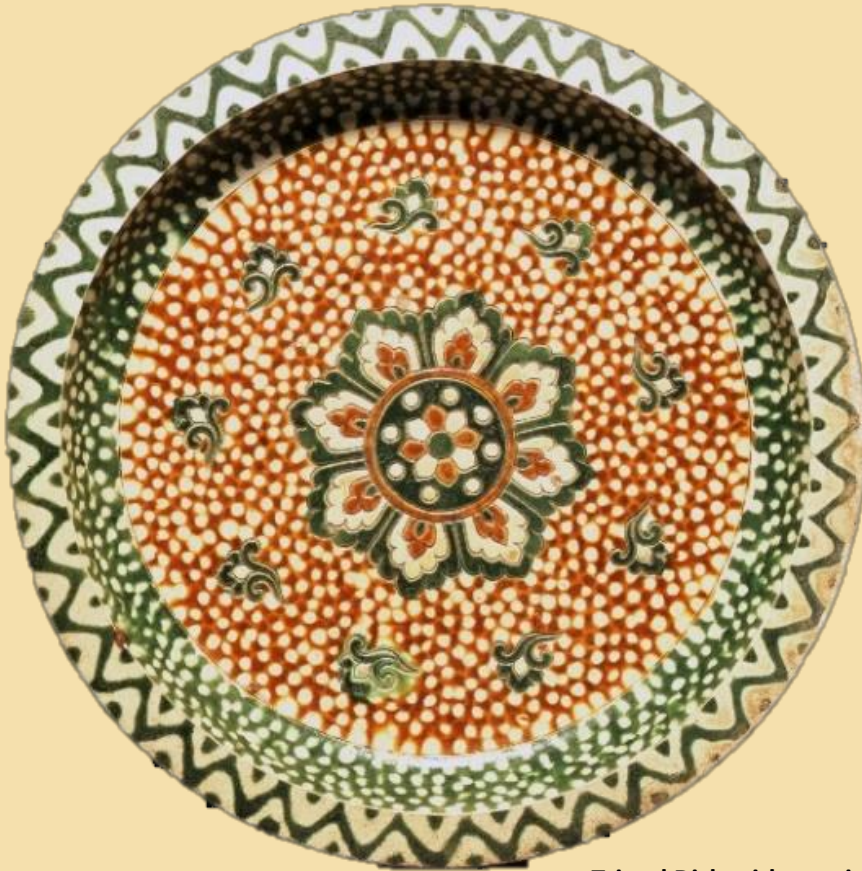
From Waseda Station T04 (Tokyo Metro Tozai Line): Walk for 15 minutes from 3a Exit.

Early Spring Exhibition 2018

Chinese ceramic collection of the Hosokawa family

—Tracing the history of Chinese ceramics through the masterpieces of the collection

February 10 —April 11, 2018



Tripod Dish with auspicious flower design

Tang Dynasty, 7th-8th century

Important Cultural Property

Chinese ceramics with their long and glorious history have enchanted Japanese people through the ages, and works of unparalleled quality and quantity have been brought from China to Japan.

Eisei Bunko Museum holds more than a hundred ceramic works from the Han through to the Qing dynasties. Hosokawa Moritatsu (1883-1970), the 16th generation and the founder of Eisei Bunko Museum, started collecting Chinese antique arts including ceramics during his eighteen months travel around Europe from 1926, and continued to enrich his collection by consulting art experts. The ceramic collection of the Hosokawa family also includes excellent tea ceremony utensils called “Karamono”, literally “Chinese things”, cherished by Hosokawa Tadaoki (Sansai) (1563-1645), the 2nd generation and a renowned tea master of the time.

This exhibition traces the history of Chinese ceramics by presenting about fifty pieces from the collection such as “Tripod Dish with auspicious flower design” and “Vase with sgraffito design of peonies”, both Important Cultural Properties.

It has been indeed 17 years since we last held the exhibition that focused on Chinese ceramics, and we are pleased to offer you an opportunity to enjoy the works that have been passed down in the Hosokawa family for generations and the world of Chinese ceramics which Hosokawa Moritatsu adored.



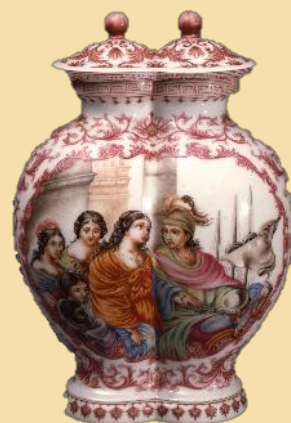
Vase with sgraffito design of peonies
Northern Song Dynasty, 11th-12th century
Important Cultural Property



Horse
Painted grey pottery
Northern Dynasty, 6th century
Important Art Object



Ewer
with peony and peacock design in overglaze enamels and gold
Ming Dynasty, 16th century
Important Art Object



Conjoined Vase with cover
with design of Western figures in colored enamels
Qing Dynasty, Qian-long Era (1736-95)
Important Art Object

Chinese ceramic collection of the Hosokawa family

—Tracing the history of Chinese ceramics through the masterpieces of the collection

Period: Saturday, February 11 – Wednesday, April 11, 2018

Hours: 10:00 am to 4:30pm (last entry 4:00pm)

Closed: Mondays except February 12, 2018

Admission fees:

Adults: 800(700) yen

Adults 70 and over: 600(500) yen

High school and College Students: 400 yen

*() indicate prices for those in groups of 10 or more.

Free admission for

Middle school students or younger

Disability Certificate holder and one extra person accompanying him/her

 **EISEI BUNKO MUSEUM**

Address

1-1-1 Mejiro-dai, Bunkyo-ku, Tokyo

Telephone 03-3941-0850

<http://www.eiseibunko.com/>