

The Eisei Bunko Collection

Eisei Bunko Museum was established in 1950 by Moritatsu, the 16th head of the Hosokawa family that formerly ruled over the vast Higo-Kumamoto domain and was authorized as a public interest incorporated foundation in December 2009. Moritatsu's intention was to preserve and carry out research of his own art collection as well as the numerous artworks and historical materials that were handed down through the family for generations.

The name "Eisei" is a combination of "Ei" of Eigen-an and "Sei" of Seiryuji (Shoryuji) Castle, both deeply connected to the history of the family. Eigen-an is a sub-temple of the Kyoto Kenninji, where successive generations from Hosokawa Yoriari (1332-91), the founder of the clan and a military commander during the Nanbokuchō period, to Mototsune (1482-1554) are buried. Shoryuji Castle was the residence of Hosokawa Fujitaka (Yusai 1534-1610), who is revered as the first generation of the modern line of the Hosokawa family.

Eisei Bunko Museum is located in a verdant area of Mejirodai in Bunkyo-ku, where visitors can enjoy the traditional landscape of Musashino. The suburban residence of the Hosokawa family was formerly located in this area, and the museum building had been previously used as "*kaseijo*" (administrative office) before renovation in the early Showa period.

The museum holds nearly 94,000 items of artworks and documents related to the 700 year history of the Hosokawa family and Moritatsu's private art collection including 8 National Treasures and 32 Important Cultural Properties. The collection consists of various objects such as arms and armor, textiles, paintings, calligraphic works, ceramics, lacquer works, sculptures, historical documents, and modern Japanese paintings, and is highly appreciated as a valuable historical resource worldwide. Research and studies of the collection continue to be carried on today with certain objects entrusted to Kumamoto University (about 58,000 items) and Keio University (about 28,000 items).

EISEI BUNKO MUSEUM

Address

1-1-1 Mejiro-dai, Bunkyo-ku, Tokyo
Telephone 03-3941-0850
<http://www.eiseibunko.com/>

Directions

From Mejiro Station (JR):

Take 白(shiro) 61 bus bound for Shinjuku Station West Exit to Mejirodai 3chome bus stop and walk for 5 minutes.

From Zoshigaya Station F10 (Tokyo Metro Fukutoshin Line):

Take 白(shiro) 61 bus bound for Shinjuku Station West Exit to Mejirodai 3chome bus stop and walk for 5 minutes.

From Waseda Station (Toei Streetcar Arakawa Line): Walk for 10 minutes.

From Edogawabashi Station Y12 (Tokyo Metro Yurakucho Line): Walk for 15 minutes from 1a Exit.

From Waseda Station T04 (Tokyo Metro Tozai Line): Walk for 15 minutes from 3a Exit.

Summer Exhibition 2018

Introduction to the Treasures of the Daimyo Family
—Aesthetic lives of lords and princesses

July 21 – October 3, 2018

 **EISEI BUNKO MUSEUM**

Address

1-1-1 Mejiro-dai, Bunkyo-ku, Tokyo

Telephone 03-3941-0850

<http://www.eiseibunko.com/>



Dog Chasing

Pair of six-panel folding screens

Edo period, 17th century



Term

Right Wing: July 21 to August 26

Left Wing: August 28 to October 3

What comes to your mind when you hear the words “treasures of the *daimyo* family”? Magnificent suits of armors for the lords? Or elegant furnishings for the princesses?

A large variety of magnificent artworks, such as armors and helmets representing bravery, paintings by the official painters to the Hosokawa clan and exquisite trousseaus and furnishings for princesses, were made under the orders of the Hosokawa Family that ruled Higo-Kumamoto Province. Most of these treasures have survived several hundred years without being dispersed and now form an essential part of the Eisei Bunko Museum’s collection. This exhibition introduces the art collection of the *daimyo* family so that visitors can feel a close affinity to the lifestyle and culture of *daimyo* family.



Cosmetic Set

with design of chrysanthemum scrolls in maki-e
Edo period, 19th century

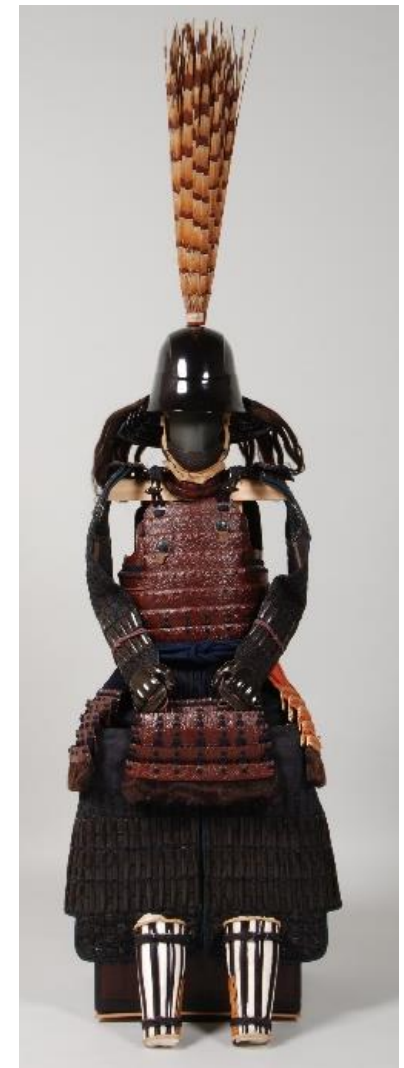


- **Pair of Shell Game Boxes**
with nine-planet family crests in maki-e
- **Shells for Shell-matching Game**
Edo period, 19th century



Tea Bowl

Known as "Natsuyama"("Summer Mountain")
Korea, Yi Dynasty, 16th-17th century



Gusoku-Type Armor

with chestnut leather-wrapped lames,
dark blue cord lacing and left tasse
laced in red
Worn by Hosokawa Narimori,
the twelfth lord
Edo period, 19th century



Noh Mask, Magojiro

Edo period, 17th century

Summer Exhibition 2018
Introduction to the Treasures of the Daimyo Family
—Aesthetic lives of lords and princesses

Period: Saturday, July 21, 2018 – Wednesday, October 3, 2018

Some of the works on display will be changed during the exhibition period.

Hours: 10:00 am to 4:30pm (last entry 4:00pm)

Closed: Mondays except September 17 and 24, 2018

Closed on September 18 and 25, 2018

Admission fees:

Adults: 800(700) yen

Adults 70 and over: 600(500) yen

High school and College Students: 400 yen

*() indicate prices for those in groups of 10 or more.

Free admission for

Middle school students or younger

Disability Certificate holder and one extra person accompanying him/her

Summer Exhibition 2018

Introduction to the Treasures of the Daimyo Family—Aesthetic lives of lords and princesses



Eisei Bunko Museum

Saturday, July 21, 2018 – Wednesday, October 3, 2018

No.	Term	Title	Artist	Date/Period	Collection
Representation of Power and Bravery					
1	On display throughout the exhibition period	Gusoku-Type Armor with chestnut leather-wrapped lames, dark blue cord lacing and left tasse laced in red Worn by Hosokawa Narimori, the twelfth lord		Edo period, 19th century	Eisei Bunko Museum (Entrusted to Kumamoto Prefectural Museum of Art)
2	On display throughout the exhibition period	Domaru-Type Armor with metal fittings in cherry blossom design and dark blue cord lacing Worn by Hosokawa Shigekata, the eighth lord		Edo period, 18th century	Eisei Bunko Museum (Entrusted to Kumamoto Prefectural Museum of Art)
3	On display throughout the exhibition period	Surcoat with one red sleeve Worn by Hosokawa Yoshikuni, the thirteenth lord		Edo period, 19th century	Eisei Bunko Museum
4	On display throughout the exhibition period	Surcoat with horizontal bands Worn by Hosokawa Narishige, the tenth lord		Edo period, 19th century	Eisei Bunko Museum
Life of Lords in Paintings					
5	Right Wing: July 21 to August 26 Left Wing: August 28 to October 3	Dog Chasing Pair of six-panel folding screens		Edo period, 17th century	Eisei Bunko Museum (Entrusted to Kumamoto Prefectural Museum of Art)
6	On display throughout the exhibition period	Arrow for Dog Chasing (<i>Hikime</i>)			Eisei Bunko Museum
7	On display throughout the exhibition period	Archer's Gloves (<i>Yugake</i>) Worn by Hosokawa Narimori and Hosokawa Yoshikuni, the twelfth and thirteenth lord		Edo period, 19th century	Eisei Bunko Museum
8	On display throughout the exhibition period	Waterfall Viewing Hanging scroll	Sugitani Sessho	Edo period, 19th century	Eisei Bunko Museum
9	On display throughout the exhibition period	Visit to the Edo Castle Handscroll	Akahoshi Kani	Dated 1887 (Meiji 20)	Eisei Bunko Museum

10	Sections on display are changed during the exhibition period	Sketches of Pigeons Handscroll	Hosokawa Narishige	Edo period, 18th-19th century	Eisei Bunko Museum
11	Sections on display are changed during the exhibition period	Suizenji Temple Garden Handscroll	Uchio Eiichi and Sugitani Yukinao	Edo period, 19th century	Eisei Bunko Museum
Elegant Furnishings for Princesses					
12	On display throughout the exhibition period	Pair of Shell Game Boxes with nine-planet family crests in <i>makie</i> Shells for Shell-matching Game		Edo period, 19th century	Eisei Bunko Museum
13	On display throughout the exhibition period	Cosmetic Set with design of chrysanthemum scrolls in <i>makie</i> Owned by Masuhime, the wife of Hosokawa Narimori, the twelfth lord Cosmetic Stand Mirror with Case and Stand Teeth-blackening Set		Edo period, 19th century	Eisei Bunko Museum
14	On display throughout the exhibition period	Writing Table and Writing Box with interlocked rectangle design inlaid in mother-of-pearl and seashells in <i>makie</i>		Edo period, 18th-19th century	Eisei Bunko Museum
15	On display throughout the exhibition period	Writing Box with rice-planting scene in <i>makie</i>		Edo period, 17th-18th century	Eisei Bunko Museum
16	On display throughout the exhibition period	Stationery Box with design of cherry blossom, nine-planet family crests and arabesque in mother-of-pearl inlay and <i>makie</i>		Edo period, 18th-19th century	Eisei Bunko Museum
17	On display throughout the exhibition period	Tiered Cabinet with paulownia and phoenix design in <i>makie</i> Presumably owned by Yufuhime, the wife of Hosokawa Shigekata, the eighth lord		Edo period, 18th century	Eisei Bunko Museum
18	Cards on display are changed during the exhibition period	Set of Cards with Poems from " <i>Ise Monogatari</i> " ("The Tales of Ise")		Edo period	Eisei Bunko Museum

Cultural Life of Lords 1: the art of incense					
19	On display throughout the exhibition period	Incense Burner with design of scattered nine-planet family crests in overglaze enamels Presumably owned by Masuhime, the wife of Hosokawa Narimori, the twelfth lord		Edo period, 19th century	Eisei Bunko Museum
20	On display throughout the exhibition period	Implements for Incense Ceremony with design of scattered fans in <i>makie</i>		Edo period, 19th century	Eisei Bunko Museum
21	On display throughout the exhibition period	Incense Game Box and Implements with design of arabesque and nine-planet family crests in <i>makie</i>		Edo period, 19th century	Eisei Bunko Museum
22	On display throughout the exhibition period	Incense Pillow and Implements for Incense Burning with nine-planet family crests in <i>makie</i> Owned by Eyo, the daughter of Hosokawa Nobunori, the sixth lord		Edo period, 18th century	Eisei Bunko Museum
23	On display throughout the exhibition period	Box for Wrapped Incense Owned by Eishoin, the mother of Hosokawa Narimori, the twelfth lord	Eishoin	Edo period, 19th century	Eisei Bunko Museum
Cultural Life of Lords 2: the art of tea ceremony					
24	Pages on display are changed during the exhibition period	Illustrated Album of Tea Caddies and Tea Bowls		Edo period, 18th century	Eisei Bunko Museum
25	On display throughout the exhibition period	Tea Bowl Known as "Natsuyama" ("Summer Mountain")		Korea, Yi Dynasty, 16th-17th century	Eisei Bunko Museum
26	On display throughout the exhibition period	Tea Bowl with two glazes on alternate halves Known as "Nenpachi" ("28th day")		Edo period, 17th century	Eisei Bunko Museum
27	On display throughout the exhibition period	Tea Scoop Known as "Kurotsuru Utsushi" ("Copy of Rikyu's tea scoop")	Hosokawa Sansai	Momoyama-Edo period, 16th-17th century	Eisei Bunko Museum
28	On display throughout the exhibition period	Tea Scoop Known as "Ginga" ("Galaxy")	Hosokawa Shigekata	Edo period, 18th century	Eisei Bunko Museum

Cultural Life of Lords 3: the art of noh					
29	On display throughout the exhibition period	Noh Mask, <i>Kokushikijo</i>		Edo period, 18th century	Eisei Bunko Museum
30	On display throughout the exhibition period	Noh Mask, <i>Kojo</i>		Edo period, 18th century	Eisei Bunko Museum
31	On display throughout the exhibition period	Noh Mask, <i>Otobide</i>	Deme Mitsuyasu	Edo period, 17th century	Eisei Bunko Museum
32	On display throughout the exhibition period	Noh Mask, <i>Ayakashi</i>	Kodama Mitsumasa	Edo period, 17th-18th century	Eisei Bunko Museum
33	On display throughout the exhibition period	Noh Mask, <i>Kantan Otoko</i>		Edo period, 17th-18th century	Eisei Bunko Museum
34	On display throughout the exhibition period	Noh Mask, <i>Magojiro</i>	Kita Shichidayu Chono	Edo period, 17th century	Eisei Bunko Museum
35	On display throughout the exhibition period	Drum Body with design of scattered fans in <i>makie</i>		Edo period, 17th century	Eisei Bunko Museum
36	On display throughout the exhibition period	Large Hand Drum Body with design of shells and seaweed in <i>makie</i>		Edo period, 17th century	Eisei Bunko Museum
37	On display throughout the exhibition period	Small Hand Drum Body with design of poem cards and fern in <i>makie</i>		Edo period, 17th century	Eisei Bunko Museum
38	On display throughout the exhibition period	Noh Flute Known as "Hokkyo"		Edo period, 18th century	Eisei Bunko Museum
39	On display throughout the exhibition period	Obi Sashes for Noh costume		Edo period, 18th century	Eisei Bunko Museum
40	On display throughout the exhibition period	Headbands for Noh costume		Edo period, 18th century	Eisei Bunko Museum